

ACCEPTED INSURANCES



www.AlpineSpringsRehab.com

814.818.0002

14 BED DETOX FACILITY

109 Woodfield Dr  
Greenville, PA 16125

24 BED INPATIENT FACILITY

226 West Erie St  
Linesville, PA 16424

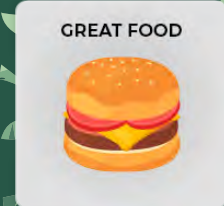
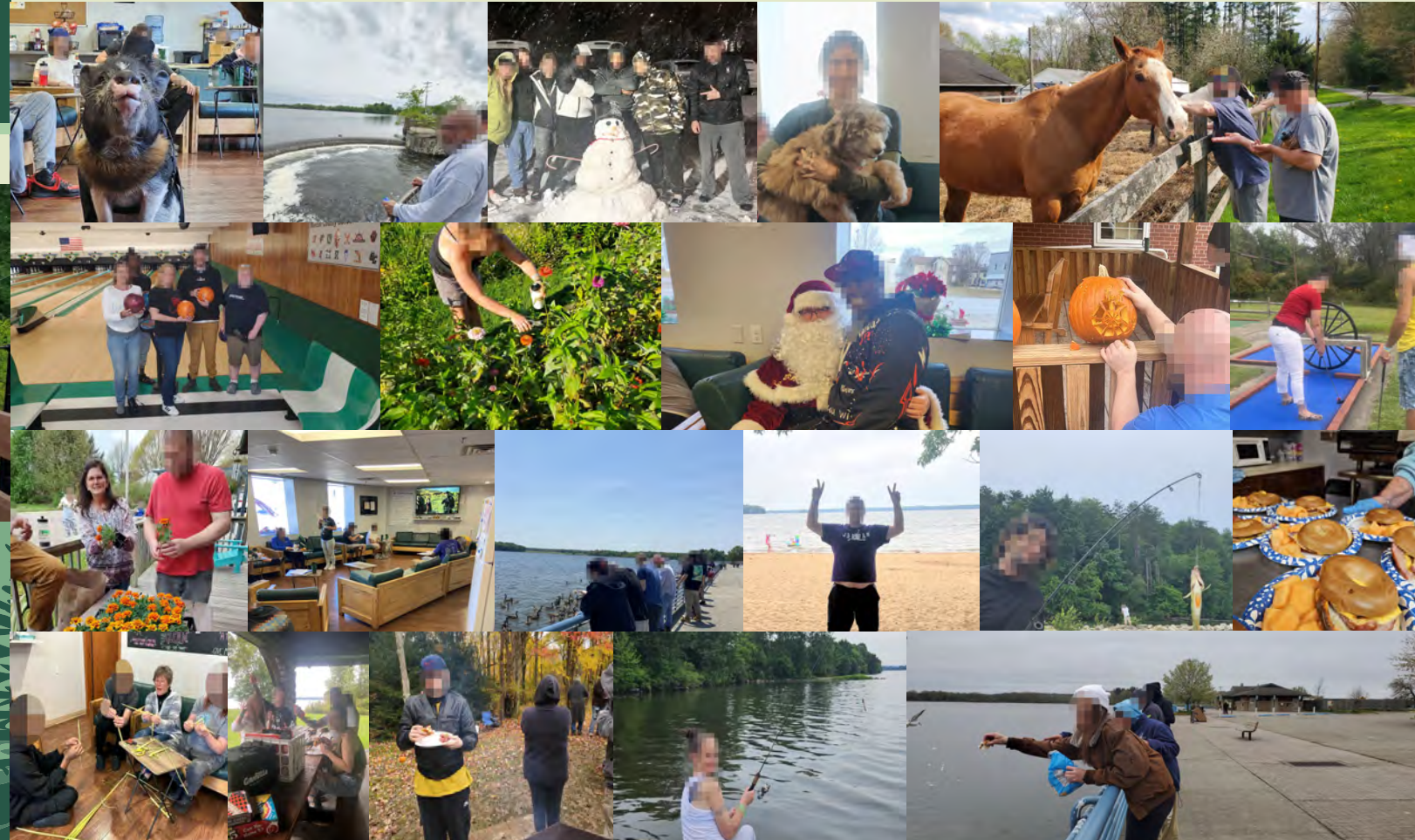
# Seeking Help for Addiction

If you or a loved one is struggling with addiction, we are here to assist you. Our addiction treatment program offers personalized care and a unique approach to recovery. We believe that being sober can be enjoyable, and we are dedicated to teaching you the skills necessary to overcome your addiction.

We understand that every individual's situation is different, which is why we prioritize individualized treatment plans to ensure you receive the best possible care.

If you're ready to take the first step towards recovery, please contact our addiction treatment center at **814-818-0002** or **fill out intake form from our website**. Our team is ready to support you on your journey.

IF YOU'RE READY,  
**WE'RE READY.**



ALPINE SPRINGS

ADDICTION TREATMENT

814.818.0002

ADDICTION TREATMENT  
SERVICING PA, OH, & NY

Providing personalized, evidence-based treatment for individuals battling addiction, empowering them to acquire the coping skills and knowledge needed to lead healthier, more fulfilling lives after leaving our facility



Award-Winning Drug  
Addiction Treatment Services



www.AlpineSpringsRehab.com

## INITIAL CALL

Alpine Springs understands that reaching out for help is a crucial step in your recovery journey, and we are available to assist you day or night. Our addiction treatment centers are open 24/7. To alleviate any concerns about the initial phone call, we want to assure you that our calls are never recorded and are always kept 100% confidential. When you call, we will ask you a few questions to better understand your situation and assess your needs for rehab services. After reviewing your assessment, our experienced staff will determine the most appropriate level of care for you or your loved one.

## VERIFYING BENEFITS

Prior to your arrival, our staff will verify your health insurance coverage and discuss any potential out-of-pocket expenses based on your policy. The specific out-of-pocket costs may vary depending on your insurance coverage. Our admissions coordinator will contact your insurance company directly to determine the appropriate level of care for you or your loved one.

## SCHEDULING OF ADMISSION

Once the admissions coordinator has gathered the necessary information, the next step is to schedule the client for admission as soon as possible. We offer admission dates and times seven days a week, and we can arrange transportation to pick up the client.

## COORDINATION OF TRAVEL

Patients come to Alpine Springs from various locations in the tri-state area. From the moment a potential client contacts our facilities, we start working with them and their family to initiate the recovery process on an individualized basis. We can assist with travel arrangements, or clients can make their own travel arrangements to our facilities.

Since discharge dates depend on the completion of a client's personalized program, our staff can also help make return transportation plans accordingly.

## ARRIVAL EXPECTATIONS

Clients are met by a staff member who will escort them to the appropriate Alpine Springs facility and begin the paperwork process. All consent forms and release information along with financial paperwork is discussed and any questions are answered.

A medical assessment follows, and the client is assisted through the check-in process by a residential coordinator on hand to answer any questions about rules and regulations.

The staff is also here to help with family medical leave paperwork and can communicate with a client's personal doctor, job supervisor, lawyer or probation officer when necessary. In most cases, this is all handled in the first 24 hours of a client's stay.

## ADMISSION GUIDELINES

We welcome individuals to our program who satisfy the following requirements for rehab admittance:

- You are over 18 years of age
- You are chemically dependent upon drugs/alcohol (addiction to drugs and seeking rehab at addiction recovery center)
- You are able to perform a reasonable level of self-care, including: eating, grooming and maintaining orderliness in your living quarters
- You express motivation and a willingness to live in an addiction treatment environment at our addiction recovery centers and pursue a sober life during and after rehab.
- You are willing to follow an addiction treatment plan developed by you and your counselor during rehab at any of our addiction recovery centers.

